

WILD WEST DISTRICT # 18 NEWSLETTER

MAY 2025

INSIDE THIS MONTH ISSUE

Meet the Staff and Agents

4-H EVENTS

Calendar

Upcoming Events



K- State Research Extension Wild West District #18 Offices

Haskell Office

(620) 675-2261

503 S. Fairgrounds Rd.

Sublette, KS 67877

Seward Office

(620) 624-5604

1081 Stadium Rd.

Liberal, KS 67901

Stevens Office

(620) 544-4359

114 E. 5th St.

Hugoton, KS 67951

OFFICE HOURS

MONDAY-FRIDAY 9:00 AM - 12:00 PM &
1:00 PM - 5:00 PM

K-STATE
Research and Extension



Wild West
District

Meet our Staff and Agents

Kristin



Nancy



Judy



Ron



Jade



Summer



Pat



Jane



Kateline



Bev



Evelyn



Kristin Penner: Director.....	pennerkr@ksu.edu
Judy Parsons: 4-H Youth Development.....	judy78@ksu.edu
Bev Schnellbacher: Haskell County OP.....	bschnel@ksu.edu
Jade Greene: 4-H Youth Development	jsgreene@ksu.edu
Pat Burt: Agriculture & Natural Resources.....	paburt@ksu.edu
Summer Stafford: Family & Community Wellness.....	summerstafford@ksu.edu
Jane Eisenhauer: SNAP - Ed.....	jeisenha@ksu.edu
Kateline Carrasco: Seward County OP.....	kcarrasco@ksu.edu
Nancy Honig: Aging/Youth Development.....	nhonig@ksu.edu
Ron Honig: Agronomy/Horticulture.....	rhonig@ksu.edu
Evelyn Moran: Stevens County OP.....	morane@ksu.edu

Connect Online

www.wildwest.ksu.edu

Find us on Facebook @ Wild West District

Kansas State University Agricultural Experiment Station and Cooperative Extension Service
K-State Research and Extension is an equal opportunity provider and employer.

K-State Research and Extension is committed to providing equal opportunity for participation in all programs, services, and activities. Program information may be available in languages other than English. Reasonable accommodations for persons with disabilities, including alternative means for communication (e.g., Braille, large print, audiotape, and American Sign Language) may be requested by contacting the event contact Kristin Penner at 620-675-2261 pennerkr@ksu.edu. Requests received after this date will be honored when it is feasible to do so. Language access services, such as interpretation or translation of vital information will be provided free of charge to limited English proficient individuals upon request.

SUNDAY	MONDAY	TUESDAY	WEDNESDAY	THURSDAY	FRIDAY	SATURDAY
 <h1>May</h1>				1 Deadline for Camp Registration & to add & drop projects in 4-H online Stevens Co. Small Bore Shooting Practice	2	3 Gas Capital Livestock Show in Hugoton
4 Haskell Co. Spring Livestock Show	5 Discovery Days Reg. Deadline HS Co. Cloverleaf SV Co. Wranglers Sewing Project Meetings	6 Seward Co. Small Animal Weigh-In	7 Sewing Project Meetings	8	9	10
11	12 Seward Co. Ornery Otters	13 Stevens Co. Cloverbuds Seward Co. Wide Awake	14 Haskell Co. Cloverbuds	15 Stevens Co. Buffalo Boosters	16	17 District 4-H Horse Project Meeting
18 Haskell Co. Victory	19 Haskell 4-H Council Community Service	20 Stevens Co. Heartland Seward Co. Showmanship Night	21 Haskell Co. 4-H Council Meeting Seward Co. Cloverbuds Counselor Training	22 Intermediate Achievement Trip to Wichita Sewing Project Meetings	23	24
25 Superstar Livestock Committee Meeting	26 District 4-H Horse Project Meeting Stevens Co. Cloverleaf Cowboys	27	28	29	30	31

Coming up in June

- 2nd: Stevens Co. Wranglers
- 2nd: Haskell Co. Cloverleaf
- 2nd: Rabbit and Horse ID Papers are due
- 4th-6th: Discovery Days KSU
- 9th: Seward Co. Ornery Otters
- 9th: Stevens County Beef Hoof Trimming & project meeting
- 9th - 10th: Camp Lakeside
- 10th: Seward Co. Wide Awake
- 11th - 13th: Wild Adventures Camp
- 15th: Haskell County Victory Club
- 17th: District Creative Cooks Contest
- 17th: Stevens Co. Heartland
- 19th: Stevens Co. Buffalo Boosters
- 22nd: SW Shotgun Organizational Meeting & Shoot
- 23rd: SW 4-H Council
- 23rd: Stevens Co. Cloverleaf Cowboys
- 24th: Haskell County Day Camp
- 25th: District Horse Worknight in Hugoton
- 26th: Beef and Senior Foods Project meeting
- 27th: Super Star- Set Up
- 28th: Super Star Show



WILD WEST DISTRICT

REMINDER

May 1st is the deadline to add and drop projects in 4-H online



CAMP LAKESIDE

Who: (7-9-year-olds)

When: June 9th & 10th at Scott Lake

To register: [click here](#)

WILD ADVENTURES CAMP

Who: (10-13-year-olds)

When: June 11th-13th at Scott Lake

To register: [click here](#)

Registration Deadline is May 1st

If you are interested in becoming a Camp Counselor contact Judy Parsons at judy78@ksu.edu or Jade Greene at jsgreene@ksu.edu

SEWING PROJECT MEETINGS

Take advantage of our beginner-friendly sewing meetings to learn the craft and produce lovely, handmade products!

SCAN TO REGISTER



Upcoming Dates:

May 5th and 22nd

5:45PM @ 1081 Stadium Road, Liberal KS

What you'll learn:

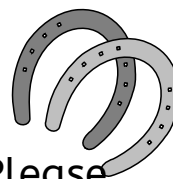
Basic Stitches
Fabric Selection
Machine Operation
Project Creation

4-H HORSE PROJECT MEETINGS

Saturday, May 17th and Monday May 26th. We will meet at 10 am each day at the fairgrounds in Hugoton.

Bring your horses and we will practice our riding skills.

Horseless youth are encouraged to attend to learn more about horses. Please call before you haul if the weather is nasty



RSVP to Judy Parsons (620-453-0732) or contact if you have any questions.

All youth enrolled in the horse project will need to submit new 4-H Horse ID paper for each horse that you want to show at your county fair to your Extension Offices by **June 1st.**

Link to form: [Horse ID Certificate](#)

4-H COUNSELOR TRAINING

This training is required for all 4-H Wild West Camp Counselors!

Within this training you will learn more about safety practices, counselor leadership best practices and more

Wednesday, May 21st @ The Stevens County 4-H Building from 9AM to 12PM

Please contact Jade at jsgreene@ksu.edu if you are interested in being a counselor but are unable to attend this meeting.

SCAN TO REGISTER!



INTERMEDIATE ACHIEVEMENT TRIP AWARD WINNERS

We will be going to Wichita on May 22nd and 23rd. Please mark your calendars and more information will be coming soon as we start to purchase tickets and make hotel reservations for the trip. If you have any questions, please contact Judy Parsons.

SUPERSTAR LIVESTOCK COMMITTEE MEETING

Sunday May 25th, @ 8:00 PM

<https://ksu.zoom.us/j/93748088670>

If you are a 4-H member living in Haskell, Seward, or Stevens County, we invite you to participate in a Zoom meeting for planning a Livestock Show for special needs youth. For questions contact Jade Greene at jsgreene@ksu.edu

SUPERSTAR

The 4th Annual Superstar Livestock Show will be held on **Saturday, June 28th in Hugoton. Superstar Livestock Show Counselors Needed!!** 4-H'er must be 14 years or older to apply to be a counselor. We need help in any capacity. You do not need livestock experience to help. You can follow us on Facebook at Superstar Livestock Show. Stop by the Extension Office or visit us online for an application. Any questions can be directed to Jade Greene at jsgreene@ksu.edu

If you are interested in becoming a counselor, [click here](#)

DISCOVERY DAYS

Kansas 4-H Discovery Days is planning to be in-person on KSU campus **June 4-6th, 2025.**

Cost: \$235; some sessions may require an additional fee



Theme: Building a Mindset for Leadership

Registration: [Register here!](#) Closes **May 5th, 2025**

Discovery Days is a mini college experience designed for youth who are 13-18 years as of January 1. Youth will have the opportunity to select classes and attend social functions.

The primary purpose of 4-H Discovery Days is to gain new ideas and expand your 4-H experience. You experience this through action-oriented learning activities, fun tours, and great evening social events. You will meet new people, build leadership skills, and grow as a person!

CREATIVE COOK'S CONTEST

4-H'ers mark your calendar for **Tuesday, June 17th** at the Hugoton High School for this year's district Creative Cooks contest. This event is open for all 4-H'ers and the Rules can be found at <https://wildwest.k-state.edu/4-h/> under the Creative Cooks tab. There is also a PowerPoint posted there with information and pictures that will help you walk through the event as well. If you have questions, need help selecting a recipe, or help with the worksheets please let Nancy know and she would love to help. Please call the Hugoton Extension office by **Monday, June 9th** to register.

Youth Entrepreneurship Challenge

By Judy Parsons

Young business owners from across the state have been competing in Youth Entrepreneurship Challenges (YEC) to qualify for the Kansas Entrepreneurship Challenge (KEC) held at Kansas State University on Thursday, April 17, 2025. These business owners are in 6th - 12th grades and are either running their own businesses or have a business concept they would like to pursue.

Local YEC contest winners across the state earned positions to compete for cash prizes at the KEC as well as youth applying for 15 Wildcard Entries. Kansas Entrepreneurship Challenge competitors each submitted an Executive Summary which is a written business summary including details of how the business intends to operate. It is similar to a business plan, but usually shorter, covering much of the same information in a summarized format. Each competitor also submits an Elevator Pitch Video which provides a brief overview of the business leaving the audience excited to learn more. The Executive Summary and Elevator Pitch Video was submitted April 1st. These were judged and given scores a few days before the actual day of the event.

On April 17, 2025, all business competitors came to the Kansas State University Union to set up a booth with their information in a trade show and also give Mock Board Room presentations in person to the event judges. The business were judged in different categories and cash prizes given out.

Three 4-H youth from Seward County competed with their business, Wovenique, at the Liberal YEC contest placing third. They submitted a Wildcard Entry and were accepted to compete at the KEC contest. **Esther, Elizabeth and Hannah Phan placed in the Exemplary Division.**





HASKELL COUNTY



SPRING LIVESTOCK SHOW

Join us on **May 4th**, at Haskell County Fairgrounds in Sublette, Ks. Scales will open at **6:30 am**.

4-H COUNCIL COMMUNITY SERVICE

For all families– Cleaning graves at the Sublette Cemetery on **Monday, May 19th at 6 pm**. Let us know if you need a ride.

4-H COUNCIL MEETING

4-H council's next meeting will be held on **May 21st**, at the **Haskell County Extension Office**. If you have any questions feel free to email: Judy Parsons at judy78@ksu.edu

CLOVERBUDS

Cloverbuds meeting will be at the Haskell County Extension Office on **Wednesday, May 14th** from 4:00-4:45 pm. This will be out last meeting of the year.



SEWARD COUNTY



MARKET ANIMAL WEIGH-IN DATES

If you plan to show a market animal it must be tagged at your county **weigh-in**. Contact Jade Greene if you have any questions at jsgreene@ksu.edu

Small Animal

Tuesday, May 6th from 4:00-6:00 pm

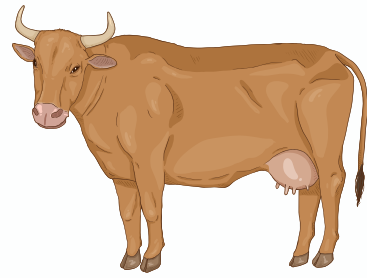
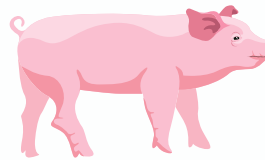
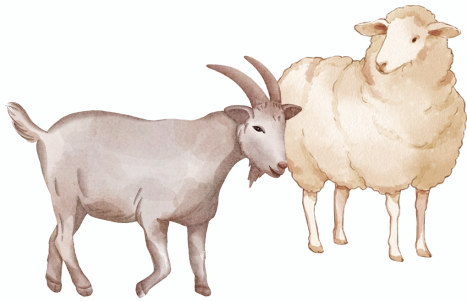
CLOVERBUDS

Cloverbuds meeting will be at the **Seward County Extension Office** on **Wednesday, May 21st**, from 3:00-3:45 pm.

Contact Jade Greene if you have any questions jsgreene@ksu.edu

SHOWMANSHIP NIGHT

Join us on **Tuesday, May 20, from 6-8 PM @ The Seward County Fairgrounds**
Call or text Charlee at **620-655-7487** to set up a time between hours that works best for you!

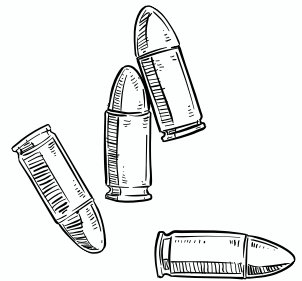


STEVENS COUNTY



SMALL BORE SHOOTING PRACTICE

Join us on **Thursday, May 1st, at 6:00PM** for Practice.
Please call Ron Honig at 620-453-1724 if you have questions.



GAS CAPITAL LIVESTOCK SHOW

Join us on **May 3rd**, the show will be starting with Swine at **8:30 am**. For questions contact Jade Greene at jsgreene@ksu.edu

CLOVERBUDS

Cloverbuds meetings will be held at **Stevens County Extension Office** on **Tuesday, May 13th** from **3:00-3:45 pm**.

Contact Nancy Honig if you have any questions nhonig@ksu.edu

4-H BUILDING DISPLAY CASE

Decorate however your 4-H Club likes. Feel free to promote 4-H or your club.

May/June - Wranglers

WILD WEST DISTRICT #18

LEARN MORE WITH K-STATE RESEARCH AND EXTENSION

ADHD Parent Support Group

Every 3rd Wednesday of the month.
A private and supportive group for caregivers
and loved ones of those affected by ADHD
6:30PM @ Starbucks Liberal Location



Wild West Walking Tour

Join Walk Kansas as a team or individual!
Grab a copy of our location's and cross off at least
5 for a chance to **win prizes!**

Move more, check out new places, and improve your overall wellness and mood!

Walk Kansas Dates: March 30- May 24
For more info call: (620) 624 -5604



Kansas State University Agricultural Experiment Station and Cooperative Extension Service K-State Research and Extension is an equal opportunity provider and employer. K-State Research and Extension is committed to providing equal opportunity for participation in all programs, services, and activities. Program information may be available in languages other than English. Reasonable accommodations for persons with disabilities, including alternative means for communication (e.g., Braille, large print, audiotape, and American Sign Language) may be requested by contacting the event contact Kristin Penner at 620-675-2261 pennerkr@ksu.edu. Requests received after this date will be honored when it is feasible to do so. Language access services, such as interpretation or translation of vital information will be provided free of charge to limited English proficient individuals upon request.

Wild West Walking Locations

Checklist

Hugoton

- ☐ Concanon Park Path
- ☐ Frisbee Park Path
- ☐ HS Track

Satanta

- ☐ Apache Park
- ☐ Swim/Grade School Path
- ☐ HS Track

Kismet

- ☐ Walking Path
- ☐ Arkalon Trail

Liberal

- ☐ 15th St. Path
- ☐ Western Ave. Path
- ☐ Light Park Path
- ☐ Blue Bonnet Path
- ☐ Pine St. Path
- ☐ Nat'l Beef Field Path
- ☐ Country Club Park Path
- ☐ Mahuron Path
- ☐ McCray Path
- ☐ All Tracks

Sublette

- ☐ Walking Path
- ☐ Rec. Walking Track
- ☐ HS Track

Moscow

- ☐ Recreation Drive Parameter
- ☐ HS Track

Participants must be registered for Walk Kansas. Complete a walk at any **5** locations on this list during Walk Kansas and return to your local Extension office to have your name put into our prize raffle!

For More Info Call: (620) 624-5604

Showmanship Night

Tuesday, May 20

6-8pm

Seward County Fairgrounds

One on One

Cattle, sheep,
Goats, & Swine

Call or Text Charlee
(620)655-7487

to set up a time that works for
you between 6-8pm

GRAND DRIVE AND KJLS IMPORTANT DATES

April 20	Last Day to Order Beef DNA Envelopes
May 1	Market Beef Nominations Due Online & DNA Postmarked
June 5	Last Day to Order Small Livestock DNA Envelopes
June 15	Small Livestock Nominations Due Online & DNA Postmarked <ul style="list-style-type: none">-Market Swine, Commercial Breeding Gilt-Market Lamb, Commercial Breeding Ewe-ALL Meat Goat (<i>Market & Breeding</i>)
	Commercial Heifer Nominations Due Online & DNA Postmarked
	Registered Breeding Heifer Papers in Exhibitor's Name
	Registered Steer Papers in Exhibitor's Name
	Registered Breeding Gilt Papers in Exhibitor's Name
July 1	Registered Breeding Ewe Papers in Exhibitor's Name
July 15	Kansas State Fair Grand Drive Entry Deadline
July 25	Kansas State Fair Grand Drive Late Entry Deadline
August 15	KJLS Entry Deadline
August 31	KJLS Late Entry Deadline
Sept. 5 - 7	Kansas State Fair Grand Drive
Oct. 3 - 5	KJLS

*All market animals must be nominated to be eligible for either show, regardless of breed or gender.

**All commercial breeding females must be nominated to be eligible for either show.

***Registered breeding females must be in the exhibitor's name by the appropriate date to be eligible for either show. Refer to show rules for details.

****All meat goats, including market, commercial breeding does, and registered breeding does must be nominated to be eligible for either show.