

WILD WEST DISTRICT # 18 NEWSLETTER

MARCH 2025

INSIDE THIS MONTH ISSUE

Meet the Staff and Agents

4-H EVENTS

Calendar

Upcoming Events



K- State Research Extension Wild West District #18 Offices

Haskell Office

(620) 675-2261

503 S. Fairgrounds Rd.

Sublette, KS 67877

Seward Office

(620) 624-5604

1081 Stadium Rd.

Liberal, KS 67901

Stevens Office

(620) 544-4359

114 E. 5th St.

Hugoton, KS 67951

OFFICE HOURS

MONDAY-FRIDAY 9:00 AM - 12:00 PM &
1:00 PM - 5:00 PM

K-STATE
Research and Extension



Wild West
District

Meet our Staff and Agents

Kristin



Nancy



Judy



Ron



Jade



Summer



Pat



Jane



Kateline



Bev



Evelyn



- Kristin Penner:** Director.....pennerkr@ksu.edu
- Judy Parsons:** 4-H Youth Development.....judy78@ksu.edu
- Bev Schnellbacher:** Haskell County OP..... bschnel@ksu.edu
- Jade Greene:** 4-H Youth Developmentjsgreene@ksu.edu
- Pat Burt:** Agriculture & Natural Resources..... paburt@ksu.edu
- Summer Stafford:** Family & Community Wellness..... summerstafford@ksu.edu
- Jane Eisenhauer:** SNAP-Ed.....jeisenha@ksu.edu
- Kateline Carrasco:** Seward County OP..... kcarrasco@ksu.edu
- Nancy Honig:** Aging/Youth Development..... nhonig@ksu.edu
- Ron Honig:** Agronomy/Horticulture..... rhonig@ksu.edu
- Evelyn Moran:** Stevens County OP..... morane@ksu.edu

Connect Online

www.wildwest.ksu.edu

Find us on Facebook @ Wild West District

Kansas State University Agricultural Experiment Station and Cooperative Extension Service
K-State Research and Extension is an equal opportunity provider and employer.

K-State Research and Extension is committed to providing equal opportunity for participation in all programs, services, and activities. Program information may be available in languages other than English. Reasonable accommodations for persons with disabilities, including alternative means for communication (e.g., Braille, large print, audiotape, and American Sign Language) may be requested by contacting the event contact Kristin Penner at 620-675-2261 pennerkr@ksu.edu. Requests received after this date will be honored when it is feasible to do so. Language access services, such as interpretation or translation of vital information will be provided free of charge to limited English proficient individuals upon request.

SUNDAY

MONDAY

TUESDAY

WEDNESDAY

THURSDAY

FRIDAY

SATURDAY



MARCH

1

Kansas 4-H
Vanier Family
Scholarships
Due

2

Haskell Co.
Shooting
Sports

3

Stevens
Co.
Beef Weigh-
In
Stevens Co.
Wrangler
Club

4

5

6

Stevens
Co.
Shooting
Sports

7

8

Stevens
Co. Beef
Weigh-In

9

Haskell Co.
Shooting
Sports
Haskell Co.
Victory Club

10

Stevens Co.
Gas Capital
Meeting

11

Stevens Co.
Cloverbuds

12

Haskell Co.
Cloverbuds

13

14

15

16

Haskell Co.
Shooting
Sports

17

St. Patrick's
Day

18

Stevens Co.
Mini Gardener
Series
Haskell Co.
Foods project
meeting

19

Seward Co.
Mini
Gardener
Series
Seward Co.
Cloverbuds

20

Haskell
Co.
Mini
Gardener
Series

21

22

23

Haskell
Co. Shooting
Sports
Superstar
Livestock
Committee
Meeting

24

Haskell Co.
Beef Weigh-
In
Haskell Co.
Spring Show
Planning
Meeting

25

26



27

28

Honor and
Grace
Dance

29

30

31

Quarterly
Volunteer
Leader
Zoom

Coming up in April

5th: Counselor Training

9th: Haskell County Cloverbuds

12th: Haskell County Market Small Animal Weigh-In

14th: Seward County Market Beef Weigh-In

16th: Seward County Cloverbuds

21st: SV 4-H Council & Jr Leaders Meeting

24th: Stevens County Market Small Animal Weigh-In

26th: Stevens County Market Small Animal Weigh-In

26th: Spring Match for Shooting Sports in Great Bend



WILD WEST DISTRICT

ATTENTION SENIORS:

The Kansas 4-H Scholarship and Vanier Family Scholarship application process is now open. Applications are due by March 1, 2025, at 11:59 PM.

To learn more about the scholarship process use the following link or click here <https://kansas4-h.org/resources/awards-and-recognition/scholarships.html>

Scholarships are available to current high school seniors & undergraduate students. There are several scholarships that graduate and professional students are eligible for.

ATTENTION WILD WEST DISTRICT SENIORS:

There are updated County Scholarship Applications on the Wild West District Website, you can find them by [clicking here](#).

Due to your local Extension Office by April 1, 2025

SUPERSTAR LIVESTOCK COMMITTEE MEETING

If you are a 4-H member living in Haskell, Seward, or Stevens County, we invite you to participate in a Zoom meeting for planning a Livestock Show for special needs youth. For questions contact Jade Greene at jsgreene@ksu.edu

Sunday, March 23, 8:00 pm

<https://ksu.zoom.us/j/93748088670>

Save the Date: The show will be June 28, 2025

Counselor sign-up is open! Please contact Jade at jsgreene@ksu.edu if you are interested in becoming a counselor or if you have any questions!

CAMP LAKESIDE

Who: (7-9-year-olds)

When: June 9th & 10th at Scott Lake

To register: [click here](#)

WILD ADVENTURES CAMP

Who: (10-13-year-olds)

When: June 11th-13th at Scott Lake

To register: [click here](#)

Registration Deadline is May 1st

If you are interested in becoming a Camp Counselor contact Judy Parson at judy78@ksu.edu or Jade Greene at jsgreene@ksu.edu

MINI MASTER GARDENERS

Join us for a fun Mini Master Gardener class. Participants will learn about the basics of container gardening and plant your very own seeds!

from 10:00 am - 12:00 pm

Dates:

March 18- Stevens County

March 19- Seward County

March 20- Haskell County

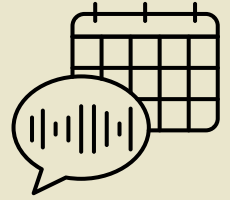


HONOR AND GRACE DANCE

Snacks, Devotion, & Instructions for Old English Country Dances that both young men & young women can enjoy: Virginia Reel, Spanish Waltz, St. Bernard's Mixer (Plus a few modern dances like Church Clap, Cha Cha Slide, & Cupid's Shuffle)
Hosted by the Heritage 4-H Club

Join us on March 28th, from 6:00 to 9:00 PM

SAVE THE DATE!



Quarterly Volunteer Leader Zoom

Join us on MONDAY (day change), March 31st at 8 pm. This is an important meeting for ALL volunteer leaders. Please mark your calendars and plan to join us for very important information as we move into a busy 4-H time of the year.

More details and a link will be sent out in March.

Please be respectful and RSVP to the leader for all the 4-H meeting including Council, Project, Leader, etc. If there are less than 3 attendees by the day before the meeting, the meeting may be cancelled. Watch our Facebook pages for any cancellations or meeting changes.

Intermediate Achievement Trip award winners

Will be going to Wichita on May 22nd and 23rd. Please mark your calendars and more information will be coming soon as we start to purchase tickets and make hotel reservations for the trip. If you have any questions, please contact Judy Parsons.

District 4-H Horse Project meetings

Saturday, May 17th and Monday May 26th. We will meet at 10 am each day at the fairgrounds in Hugoton. Bring your horses and we will practice our riding skills. Horseless youth are encouraged to attend to learn more about horses.

Please call before you haul if the weather is nasty.

RSVP to Judy Parsons (620-453-0732) or contact if you have any questions.

ALL youth enrolled in the horse project will need to submit **new 4-H Horse ID papers** for each horse that you want to show at your county fair to your Extension Offices by June 1st.

Link to form: [Horse ID Certificate](#)

2025 Regional Club Day

Intermediate Results

Elizabeth Phan	SW	Illustrated Talk	Top Blue
Hailey Heatherman	HS	Illustrated Talk	Top Blue
Liam Hatcher	HS	Illustrated Talk	Top Blue
Madison Niehues	SV	Illustrated Talk	Blue
Maleah Kraemer	HS	Project Talk	Top Blue
Makennan Kraemer	HS	Project Talk	Top Blue
Tejan Delaplane	HS	Project Talk	Blue
Chase Lewis	MT	Demonstration	Top Blue
Kory Frownfelter	MT	Demonstration	Blue
Liam Hatcher	HS	Piano Solo	Top Blue
Micah Johnson	SV	Piano Solo	Blue
James Shelton	SV	Piano Solo	Blue
Madison Niehues & Kendall Harper	SV	Piano Duet	Blue
Makennan & Maleah Kraemer	HS	Piano Duet	Blue
Liam Hatcher	HS	Vocal Solo	Top Blue
Emmaleigh Rotolo	SW	Dance	Top Blue
Alivia Grubbs	SV	Dance	Blue
Alivia Grubbs	SV	Reading	Top Blue
Charli Parsons	SW	Reading	Top Blue
Madison Niehues	SV	Reading	Blue

2025 Regional Club Day

Junior Results

Kori & Kole Kirkham	SV	Illustrated Talk	Top Blue
Heritage Lego Group	SW	Project Talk	Top Blue
Gracelynn Johnson	SV	Project Talk	Top Blue
Josie Parker	MT	Demonstration	Top Blue
Cora Hatcher	HS	Demonstration	Blue
Sawyer Buchman	SW	Piano Solo	Blue
Baylor Hinz	SV	Reading	Top Blue
Guadalupe Moran	SV	Reading	Top Blue
Gracelynn Johnson	SV	Reading	Top Blue
Emmi Parsons	SW	Reading	Top Blue
Josie Parker	MT	Reading	Top Blue
Aubrey Haar	SV	Reading	Blue
Kenley Frownfelter	MT	Reading	Blue

2025 Regional Club Day

Senior Results

Haskell County	HS	Model Meeting	Top Blue
Grant County	GT	Model Meeting	Blue
Victory 4-H Club	HS	Novelty	Top Blue
Kassidy & Kamryn Kirkham	SV	Illustrated Talk	Top Blue
Morgan Niehues	SV	Illustrated Talk	Top Blue
Lexi Wright	HS	Illustrated Talk	Top Blue
Cy Greeson	HS	Illustrated Talk	Top Blue
Hannah Phan	SW	Illustrated Talk	Blue
Harley Heatherman	HS	Illustrated Talk	Blue
Trelawney Horinek	HS	Illustrated Talk	Blue
Clayton Kunselman	HS	Extemporaneous	Top Blue
Teagan Deyoe	GT	CRI	Top Blue
Clayton Kunselman	HS	CRI	Top Blue
Tobias Grubbs	SV	Public Speaking	Top Blue
Clayton Kunselman	HS	Public Speaking	Blue
Morgan Niehues	SV	Piano Solo	Top Blue
Tobias & Clayton Grubbs	SV	Piano Duet	Top Blue
Harley & Hailey Heatherman	HS	Piano Duet	Top Blue
Tobias Grubbs	SV	Vocal Solo	Top Blue
Morgan Niehues	SV	Vocal Solo	Top Blue
Morgan Niehues	SV	Reading	Top Blue
Trelawney Horinek	HS	Reading	Top Blue



PARENTS CORNER



Let's Go to Camp! This bitter cold weather makes us long for warmer weather. Before we know it, it will be time for camp. It is never too late to put our 4-H camps on your schedule as registrations for them will be coming out in March and April.

Camps that are available are:

Camp Lakeside

(7-9-year-olds)

June 9th & 10th at Scott Lake

\$140- Includes meals, activities, and T-shirt

Wild Adventures Camp

(10-13-year-olds)

June 11th-13th at Scott Lake

\$225- Includes meals, activities, and T-shirt

Discovery Days

(13-18 year-olds)

June 4th-6th at KSU Campus in Manhattan

For more information: [click here](#)

Camp Counselors are needed for our camps at Scott Lake. Mandatory training will be given to our counselors this year. This is a great leadership opportunity for our older youth.

There will be several Day Camps scheduled this summer in each county in the Wild West District. Watch our monthly newsletter for details and registration

Please contact your County Extension Office for more information and registrations.



HASKELL COUNTY

CLOVERBUDS

Cloverbuds is for kids 5-6 years old to learn about 4-H in a fun & non-competitive way!

If you know any children interested in fun, we invite them to join our Cloverbuds program. No fee to join! Enrollment is open.

Cloverbuds meeting will be **at the Haskell County Extension Office on Wednesday, March 12th from 4:00-4:45 pm.**

FOODS PROJECT MEETING

Join us on **Tuesday, March 18th, at 10:00 AM** at the **Extension Office.**

Come spend the morning perfecting some basic baking skills as well as baking!

Please call the Haskell County Extension Office to RSVP 620-675-2261



MARKET ANIMAL WEIGH-IN DATES

If you plan to show a market animal it must be tagged at your county weigh-in.

Contact Jade Greene if you have any questions at jsgreene@ksu.edu

Beef

Monday, March 24th from 5:00-7:00 pm

Small Animal

Saturday, April 12th from 9:00 am -12:00 pm with Arena Set-Up to follow.

SPRING SHOW COMMITTEE MEETING

Join us on **Monday, March 24, at 7:00 PM** at the **Extension Office.**

SHOOTING SPORTS PRACTICE

Practices will be held **every Sunday at 3:00pm**

Participants will be notified of any changes to the schedule.

4-Hers must have their participation fees paid to shoot. For more information, contact Bethany Wood at (620)510-2636

ATTENTION SWINE PROJECT PARTICIPANTS

New for Fair this year, the cross class will be broken into light and dark crosses. There will be a champion and reserve champion for both light cross and dark cross in the Grand Drive. Happy Shopping!!





STEVENS COUNTY



CLOVERBUDS

Cloverbuds is for kids 5-6 years old to learn about 4-H in a fun and non-competitive way!

If you know any children interested in fun, we invite them to join our Cloverbuds program. No fee to join! Enrollment is open.

Cloverbuds meetings will be held at **Stevens County Extension Office on Tuesday, March 11th from 3:00-3:45 pm.**

Contact Nancy Honig if you have any questions nhonig@ksu.edu

SARA LEE AND E. BUDD ANDERSON YOUTH GRANT

The Anderson grant was established for Stevens County Youth to improve their community through leadership projects either done individually, as a small group, or as a club. The grant money, up to \$1,000 is to be used to fulfill a community need. **We are still taking applications.** *Last year the grant was used for painting parking lot lines of many churches in the community.* If you have questions about the grant contact Nancy Honig at (620) 544-4359.

<https://wildwest.k-state.edu/4-h/docs/sara%20and%20budd%20grantapp.pdf>

SHOOTING SPORTS PRACTICE

BB Gun, Air Rifle, and Air Pistol Shooting Sports practice will be held at the 4-H Building from 6:00 to 8:00 pm. All equipment is provided but you may bring your own.
Thursday, March 6th

Please call Ron Honig at 620-453-1724 if you have questions.

4-H BUILDING DISPLAY CASE

Decorate however your 4-H Club likes. Feel free to promote 4-H or your club.
March/April - Heartland
May/June - Wranglers

GAS CAPITAL MEETING

Gas Capital Livestock Show Committee Planning Meeting will be held on **Monday, March 10, at 6:00 PM at the Extension Office.** *Enrollment in the livestock project is not a requirement.*

MARKET ANIMAL WEIGH-IN DATES

If you plan to show a market animal it must be tagged at your county weigh-in. Contact Jade Greene if you have any questions at jsgreene@ksu.edu

Beef

Monday, March 3rd from 4:00-6:00 pm
Saturday, March 8th from 10:00 am - 12:00 pm

Small Animal

Thursday, April 24th from 4:00-6:00 pm
Saturday, April 26th from 9:00 am - 12:00 pm with Arena Set Up to follow.

ATTENTION SWINE PROJECT PARTICIPANTS

New for Fair this year, the cross class will be broken into light and dark crosses. There will be a champion and reserve champion for both light cross and dark cross in the Grand Drive. You will also be able to bring four pigs to the County Fair. Happy Shopping!!



STEVENS COUNTY CLUB DAY RESULTS

Demonstrations, Illustrated Talks - Home Ec Room

Top Blue	Madison Niehues	Illustrated Talk
Blue	Clara Morris	Illustrated Talk
Top Blue	Morgan Niehues	Illustrated Talk
Blue	Natalia Moran	Illustrated Talk

Readings, Skits, Novelty, Dance - Old Cafeteria

Top Blue	Bayler Hinz	Reading
Red	Shane Morris	Reading
Top Blue	Alivia Grubbs	Dance
Blue	Natalia Moran	Reading
Top Blue	Madison Niehues	Reading
Red	Sawyer Buchman	Reading
Top Blue	Avery Haar	Reading
Blue	Luke Buchman	Reading
Top Blue	Guadalupe Moran	Reading
Top Blue	Gracelynn Johnson	Reading
Top Blue	Aubrey Haar	Reading
Red	Sawyer Buchman	Reading
Top Blue	Morgan Niehues	Reading
Top Blue	Alivia Grubbs	Reading
Blue	Clara Morris	Reading

Stevens County Club Days - February 8, 2025

Music - Music Room

Blue	Kathryn Brown	Instrumental Solo - Piano
Blue	Alivia Grubbs	Musical Talent
Blue	Bently Esarey	Musical Talent
Top Blue	Morgan Niehues	Vocal Solo
Blue	Elodie Sullivan	Instrumental Solo - Piano
Top Blue	Micah Johnson	Instrumental Solo - Piano
Blue	Alivia Grubbs	Instrumental Solo - Piano
Top Blue	Madison & Kendall	Instrumental Duet - Piano
Top Blue	James Shelton	Instrumental Solo - Piano
Blue	Guadalupe Moran	Instrumental Solo - Piano
Blue	Jack Sullivan	Instrumental Solo - Piano
Blue	Luke Buchman	Instrumental Solo - Guitar
Top Blue	Grubbs Brothers	Instrumental Duet - Piano
Top Blue	Morgan Niehues	Instrumental Solo - Piano
Top Blue	Sawyer Buchman	Instrumental Solo - Piano - Battle Hymn
Blue	Sadie Settlemyer	Instrumental Solo - Piano
Top Blue	Tobias Grubbs	Vocal Solo
Blue	Sawyer Buchman	Instrumental Solo - Piano - Jukebox

Project Talks, Extemporaneous, Pickle Talks - Band Room

Top Blue	Gracelynn Johnson	Project Talk
Top Blue	Tobias Grubbs	Public Speaking
Top Blue	Channing Dillinger	Extemporaneous
Blue	Kendra Hermreck	Extemporaneous
Pickle	Shane Morris	Pickle Talk
Participation	Jose Moran	Show and Tell
Pickle	Alivia Grubbs	Pickle Talk
Top Blue	Clayton Grubbs	Extemporaneous
Pickle	Guadalupe Moran	Pickle Talk
Top Blue	Cody Gerrond	Extemporaneous
Pickle	Micah Johnson	Pickle Talk
Top Blue	Tobias Grubbs	Extemporaneous
Pickle	Bailey Gerrond	Pickle Talk
Pickle	Jose Moran	Pickle Talk
Top Blue	Channing Dillinger	Interview
Top Blue	Tobias Grubbs	Interview



SEWARD COUNTY



CLOVERBUDS

Cloverbuds is for kids 5-6 years old to learn about 4-H in a fun and non-competitive way!

If you know any children interested in fun, we invite them to join our Cloverbuds program. No fee to join! Enrollment is open.

Cloverbuds meeting will be at the **Seward County Extension Office** on **Wednesday, March 19th** from **3:00-3:45 pm**.

Contact Jade Greene if you have any questions jsgreene@ksu.edu

MARKET ANIMAL WEIGH-IN DATES

If you plan to show a market animal it must be tagged at your county weigh-in.

Contact Jade Greene if you have any questions at jsgreene@ksu.edu

Beef

Monday, April 14th at 7:00 pm

Small Animal

Tuesday, May 6th from 4:00-6:00 pm

2025 Seward County Club Days Results		
Heritage Club	Dance	Top Blue
Ornery Otters Club	Skit	Top Blue
Kassidy & Kamryn Kirkham	Illustrated Talk - Sr	Top Blue
Emmaleigh Rotolo	Dance - Int	Top Blue
Maddy Vermillion	Illustrated Talk - Sr	Blue
Kori and Kole Kirkham	Illustrated Talk - Jr	Top Blue
Elizabeth Phan	Illustrated Talk - Int	Top Blue
Emmaleigh Rotolo	Pickle Talk - Int	Pickle
Patrick Scott	Demonstration - Sr	Blue
Dorian Meyers	Instrumental Solo - Jr	Blue
James Phan	Demonstration - Jr	Top Blue
Faith Meyers	Show and Tell - Cloverbud	Purple
Aidan Vermillion	Illustrated Talk - Int	Top Blue
Hannah Phan	Illustrated Talk - Sr	Top Blue
Dorian Meyers	Pickle Talk - Jr	Pickle
Emily Vermillion	Reading - Jr	Top Blue
Elizabeth Phan	Pickle Talk - Int	Pickle
Benjamin Smith	Reading - Jr	Top Blue
Dorian Meyers	Show and Tell - Jr	Purple
Faith Meyers	Reading - Cloverbud	Purple
Heritage Lego Group	Project Talk - Jr	Top Blue

WILD WEST DISTRICT #18

LEARN MORE WITH K-STATE RESEARCH AND EXTENSION

ADHD Parent Support Group

Every 3rd Wednesday of the month.
A private and supportive group for caregivers
and loved ones of those affected by ADHD

6:30PM @ Starbucks Liberal Location

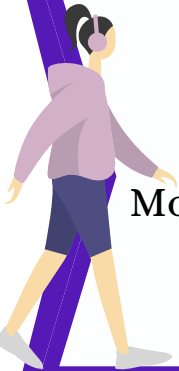


Wild West Walking Tour

Join Walk Kansas as a team or individual!
Grab a copy of our location's and cross off at least
5 for a chance to **win prizes!**

Move more, check out new places, and improve your overall wellness and
mood!

Walk Kansas Dates: March 30- May 24
For more info call: (620) 624 -5604



Babysitting Clinic

**\$35
PER
PERSON**

Join us on Saturday,
March 8, from 9am-2pm
@ Meade County EMS
(725 W Carthage, Meade, KS)

Call to Sign Up: (620) 873-8790

Training Includes:

- Basic Child & Infant CPR
- Basic First Aid & Safety
- Food Prep & Safety
- Play & Behavior Management



Kansas State University Agricultural Experiment Station and Cooperative Extension Service K-State Research and Extension is an equal opportunity provider and employer. K-State Research and Extension is committed to providing equal opportunity for participation in all programs, services, and activities. Program information may be available in languages other than English. Reasonable accommodations for persons with disabilities, including alternative means for communication (e.g., Braille, large print, audiotape, and American Sign Language) may be requested by contacting the event contact Kristin Penner at 620-675-2261 pennerkr@ksu.edu. Requests received after this date will be honored when it is feasible to do so. Language access services, such as interpretation or translation of vital information will be provided free of charge to limited English proficient individuals upon request.

Wild West Walking Locations *Checklist*

Hugoton

- Concanon Park Path
- Frisbee Park Path
- HS Track

Satanta

- Apache Park
- Swim/Grade School Path
- HS Track

Kismet

- Walking Path
- Arkalon Trail

Liberal

- 15th St. Path
- Western Ave. Path
- Light Park Path
- Blue Bonnet Path
- Pine St. Path
- Nat'l Beef Field Path
- Country Club Park Path
- Mahuron Path
- McCray Path
- All Tracks

Sublette

- Walking Path
- Rec. Walking Track
- HS Track

Moscow

- Recreation Drive Parameter
- HS Track

Participants must be registered for Walk Kansas. Complete a walk at any **5** locations on this list during Walk Kansas and return to your local Extension office to have your name put into our prize raffle!

For More Info Call: (620) 624-5604

MAR
28

HONOR & GRACE DANCE



K-State Extension 4H Building
1081 Stadium Road, Liberal, KS

6 - 9 p.m. Friday, March 28

Snacks, Devotion, & Instructions for Old English Country Dances that both young men & young women can enjoy: Virginia Reel, Spanish Waltz, St. Bernard's Mixer (Plus a few modern dances like Church Clap, Cha Cha Slide, & Cupid's Shuffle)

PLEASE BRING POTLUCK SNACKS

Ages: 8-18

ATTIRE: DRESSY CASUAL

(Collared shirts for guys, modest dresses for ladies)

Hosted by the Heritage 4H Club

RSVP to Nancy at 720-427-2131