

WILD WEST DISTRICT # 18 NEWSLETTER

APRIL 2025

INSIDE THIS MONTH ISSUE

Meet the Staff and Agents

4-H EVENTS

Calendar

Upcoming Events



K- State Research Extension Wild West District #18 Offices

Haskell Office

(620) 675-2261

503 S. Fairgrounds Rd.

Sublette, KS 67877

Seward Office

(620) 624-5604

1081 Stadium Rd.

Liberal, KS 67901

Stevens Office

(620) 544-4359

114 E. 5th St.

Hugoton, KS 67951

OFFICE HOURS

MONDAY-FRIDAY 9:00 AM - 12:00 PM &
1:00 PM - 5:00 PM

K-STATE
Research and Extension



Wild West
District

Meet our Staff and Agents

Kristin



Nancy



Judy



Ron



Jade



Summer



Pat



Jane



Kateline



Bev



Evelyn



- Kristin Penner:** Director.....pennerkr@ksu.edu
- Judy Parsons:** 4-H Youth Development.....judy78@ksu.edu
- Bev Schnellbacher:** Haskell County OP..... bschnel@ksu.edu
- Jade Greene:** 4-H Youth Developmentjsgreene@ksu.edu
- Pat Burt:** Agriculture & Natural Resources..... paburt@ksu.edu
- Summer Stafford:** Family & Community Wellness..... summerstafford@ksu.edu
- Jane Eisenhauer:** SNAP-Ed.....jeisenha@ksu.edu
- Kateline Carrasco:** Seward County OP..... kcarrasco@ksu.edu
- Nancy Honig:** Aging/Youth Development..... nhonig@ksu.edu
- Ron Honig:** Agronomy/Horticulture..... rhonig@ksu.edu
- Evelyn Moran:** Stevens County OP..... morane@ksu.edu

Connect Online

www.wildwest.ksu.edu

Find us on Facebook @ Wild West District

Kansas State University Agricultural Experiment Station and Cooperative Extension Service
K-State Research and Extension is an equal opportunity provider and employer.

K-State Research and Extension is committed to providing equal opportunity for participation in all programs, services, and activities. Program information may be available in languages other than English. Reasonable accommodations for persons with disabilities, including alternative means for communication (e.g., Braille, large print, audiotape, and American Sign Language) may be requested by contacting the event contact Kristin Penner at 620-675-2261 pennerkr@ksu.edu. Requests received after this date will be honored when it is feasible to do so. Language access services, such as interpretation or translation of vital information will be provided free of charge to limited English proficient individuals upon request.

SUNDAY

MONDAY

TUESDAY

WEDNESDAY

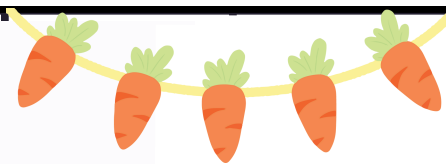
THURSDAY

FRIDAY

SATURDAY



APRIL



1
Seward Co.
YQCA
Training

2

3 Haskell Co.
YQCA
Training
Seward Co.
Crochet Project
meeting

4

5
Counselor
Training

6
Haskell Co.
Shooting
Sports

7 Stevens
Co.
Wranglers
Haskell Co.
Cloverleaf

8 Stevens Co.
YQCA
Training
Seward Co.
Wide Awake

9 Haskell Co.
Cloverbuds
Stevens Co.
Buffalo
Boosters

10
Sewing
Project
Meeting

11

12
Haskell Co.
Small Animal
Weigh-In

13
Haskell Co.
Shooting
Sports
&
Victory
Club

14 Seward Co.
Beef
Weigh-In
Seward Co.
Ornery Otters

15
Stevens Co.
Heartland

16
Seward Co.
Cloverbuds

17

18
*Good
Friday*
--CLOSED--

19

20
*HAPPY
Easter*

21 SV Co. Gas
Capital
Meeting
& 4H Council
& Jr. Leader

22

23
SCCC
Livestock
Judging
Contest

24 Stevens
Co. Small
Animal
Weigh-In
Sewing
Project
Meeting

25

26 Stevens
Co. Small
Animal
Weigh-In
Spring Match
for Shooting
Sports

27
SuperStar
Zoom
meeting

28 Stevens
Co.
Cloverleaf
Cowboys
Haskell Co.
Spring
Show
Meeting

29
Haskell Co.
Shooting
Sports

30

Coming up in May

1st: Registration deadline for Camp Counselor

1st: Deadline to register Camp Lakeside and Wild Adventures Camp

3rd: Gas Capital Spring Show/Hugoton

4th: Haskell Co. Spring Livestock Show

6th: Seward Co. Small Animal Weigh-In

13th: Stevens Co. Cloverbuds

14th: Haskell Co. Cloverbuds

17th: District 4-H Horse Project Meeting

21st: Haskell Co. 4-H Council Meeting

21st: Seward Co. Cloverbuds

22-23rd: Intermediate Achievement Trip to Wichita

25th: SuperStar Zoom

26th: District 4-H Horse Project Meeting



WILD WEST DISTRICT

4-H STATE PANORAMA RESULTS

Congratulations to the following members in Stevens County!!

Cody Gerrond- 1st Place (PowerPoint Presentation)

Bailey Gerrond- 2nd place (Logo Contest)

Madison Neihues - Participation (Intermediate Photography)

Morgan Neihues- Participation (Sr. Photography)

ATTENTION WILD WEST DISTRICT SENIORS:

There are updated County Scholarship Applications on the Wild West District Website, you can find them by [clicking here](#).

Due to your local Extension Office by April 1, 2025

4-H COUNSELOR TRAINING

This training is required for all 4-H Wild West Camp Counselors!

Within this training you will learn more about safety practices, counselor leadership best practices and more

**Saturday, April 5th @ the Stevens County 4-H Building
from 9AM to 12PM**

Please contact Jade at jsgreene@ksu.edu if you are interested in being a counselor but unable to attend this training

SCAN TO REGISTER!



SEWING PROJECT MEETINGS

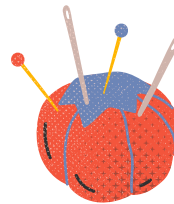
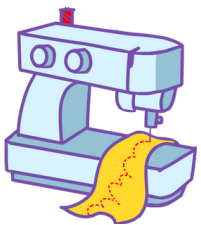
Take advantage of our beginner-friendly sewing meetings to learn the craft and produce lovely, handmade products!

Upcoming Dates:

April 10th & 24th

5:45PM @ 1081

Stadium Road, Liberal KS



What you'll learn:

Basic Stitches

Fabric Selection

Machine Operation

Project Creation

SCAN TO REGISTER!



SCCC LIVESTOCK JUDGING CONTEST

Livestock judging opportunity in Liberal, KS on **April 23, 2025** at the SCCC AG Building. If interested in participating, contact Jade Greene at jsgreene@ksu.edu to get registered.

CAMP LAKESIDE

Who: (7-9-year-olds)

When: June 9th & 10th at Scott Lake

To register: [click here](#)

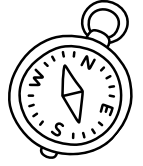


WILD ADVENTURES CAMP

Who: (10-13-year-olds)

When: June 11th-13th at Scott Lake

To register: [click here](#)



Registration Deadline is May 1st

If you are interested in becoming a Camp Counselor contact Judy Parson at judy78@ksu.edu or Jade Greene at jsgreene@ksu.edu

4-H HORSE PROJECT MEETINGS

Saturday, May 17th and Monday May 26th. We will meet at 10 am each day at the fairgrounds in Hugoton.

Bring your horses and we will practice our riding skills.

Horseless youth are encouraged to attend to learn more about horses. Please call before you haul if the weather is nasty.

RSVP to Judy Parsons (620-453-0732) or contact if you have any questions.

All youth enrolled in the horse project will need to submit new 4-H Horse ID paper for each horse that you want to show at your county fair to your Extension Offices by **June 1st.**

Link to form: [Horse ID Certificate](#)

INTERMEDIATE ACHIEVEMENT TRIP AWARD WINNERS

We will be going to Wichita on May 22nd and 23rd. Please mark your calendars and more information will be coming soon as we start to purchase tickets and make hotel reservations for the trip. If you have any questions, please contact Judy Parsons.

SUPERSTAR LIVESTOCK COMMITTEE MEETING

If you are a 4-H member living in Haskell, Seward, or Stevens County, we invite you to participate in a Zoom meeting for planning a Livestock Show for special needs youth. For questions contact Jade Greene at jsgreene@ksu.edu

Sunday April 27th, @ 8:00 PM

<https://ksu.zoom.us/j/93748088670>

Save the date: The show will be June 28, 2025

Counselor sign-up is open! Please contact Jade at jsgreene@ksu.edu if you are interested in becoming a counselor or if you have any questions!

PARENTS CORNER

April 20-26 is National Volunteer Week. Volunteers are the backbone of the 4-H Program and without them there would be no program. This week is a special time to recognize and thank all the awesome volunteer leaders we had helping us “Make the Best Better”.

Here are some ideas to celebrate our special Volunteers:

- Encourage your club members and families to recognize their organizational leaders, project leaders, and other important 4-H volunteers during the week.
- Prepare a series of Social Media posts on your club pages to recognize volunteers during the week
- Handwrite notes of appreciation to special volunteers in your program.

Our Volunteers are busy planning project meetings and other events for our 4-H Program. Please be respectful and RSVP to the leader for all 4-H meetings such as Project meetings. If there are less than 3 attendees by the day before the meeting, the meeting may be cancelled. Watch our Facebook pages for any cancellations or meeting changes. Also, respect their time commitment for you and be on time or call if you are running late.

And we are always looking for more volunteers to help us. If you or you know someone who would like to help anywhere in the 4-H Program, please contact one of our Extension Agents.

The word "Volunteer" is written in a large, stylized font. Each letter is a different color and has a unique, textured appearance, such as being cut out of paper or having a wood-grain pattern. The colors include shades of green, blue, and white. The letters are arranged in a slightly wavy line across the page.



YQCA TRAINING

If you are planning to participate in the county fair as a livestock exhibitor, it is mandatory to complete your YQCA certification. This applies to all market animals that you intend to sell including poultry & rabbits. Additionally, if you're planning to show livestock at the Kansas State Fair and/or Kansas Junior Livestock Show, you must have completed the certification to be eligible to show.

This will take place at the Commercial building in Sublette on April 3, @7:00PM

To register for the training:

Go to [_https://yqcaprogram.org/](https://yqcaprogram.org/)

Log in or create an account

Choose instructor-led training certification, if you want to attend an in-person training.

Instructor-led training certification: \$3

Online certification training: \$12

For questions contact Jade Greene at jsgreene@ksu.edu

SHOOTING SPORTS PRACTICE

Practices will be held **every Sunday at 3:00pm**

Participants will be notified of any changes to the schedule.

4-Hers must have their participation fees paid to shoot. For more information, contact Bethany Wood at (620)510-2636

CLOVERBUDS

Cloverbuds is for kids 5-6 years old to learn about 4-H in a fun & non-competitive way!

If you know any children interested in fun, we invite them to join our Cloverbuds program. No fee to join! Enrollment is open.

Cloverbuds meeting will be **at the Haskell County Extension Office on Wednesday, April 9th from 4:00-4:45 pm.**

MARKET ANIMAL WEIGH-IN DATES

If you plan to show a market animal it must be tagged at your county weigh-in.

Contact Jade Greene if you have any questions at jsgreene@ksu.edu

Small Animal

Saturday, April 12th from 9:00 am - 12:00 pm with Arena Set-Up to follow.

SPRING SHOW MEETING

Join us at the Haskell County Extension Office at 605 Fairgrounds St. for our Spring show meeting on **Monday, April 28th @6:30PM**

**** Spring Livestock Show will be May 4th**

4-H COUNCIL MEETING

4-H council's next meeting will be held on **May 21st, at the Haskell County Extension Office**. If you have any questions feel free to email: Judy Parsons at judy78@ksu.edu

ATTENTION SWINE PROJECT PARTICIPANTS

New for Fair this year, the cross class will be broken into light and dark crosses. There will be a champion and reserve champion for both light cross and dark cross in the Grand Drive. Happy Shopping!!

SEWARD COUNTY

YQCA TRAINING

If you're planning to participate in the county fair as a livestock exhibitor, it's mandatory to complete your YQCA certification. This applies to all market animals that you intend to sell. Additionally, if you're planning to show livestock at the Kansas State Fair and/or Kansas Junior Livestock Show, you must have completed the certification to be eligible to show.

The meeting will take place at the 4-H Building on April 1st, at 7:00 PM

To register for the training:

Go to <https://yqcaprogram.org/>

Log in or create an account

Choose instructor-led training certification, if you want to attend an in-person training.

Instructor-led training certification: \$3

Online certification training: \$12

For questions contact Jade Greene at jsgreene@ksu.edu

MARKET ANIMAL WEIGH-IN DATES

If you plan to show a market animal it must be tagged at your county weigh-in. Contact Jade Greene if you have any questions at jsgreene@ksu.edu

Beef

Monday, April 14th at 7:00 pm

Small Animal

Tuesday, May 6th from 4:00-6:00 pm

CROCHET PROJECT MEETING

Join us on **Thursday, April 3, 2025 from 6-8PM** at the 4H Building as we learn the basics of crochet Amigurumi! Yarn and Hook are provided, however, if you would like to bring your own please bring a 4mm crochet hook and one skien of yarn so you can continue learning at home!

RSVP: <http://bit.ly/3DVyMHU>

CLOVERBUDS

Cloverbuds is for kids 5-6 years old to learn about 4-H in a fun and non-competitive way!

If you know any children interested in fun, we invite them to join our Cloverbuds program. No fee to join! Enrollment is open.

Cloverbuds meeting will be at the **Seward County Extension Office** on **Wednesday, April 16th** from **3:00-3:45 pm**.

Contact Jade Greene if you have any questions jsgreene@ksu.edu

RADA FUNDRAISER

Rada books are now available! Stop by at the extension office to get yours and start selling!



YQCA TRAINING

If you're planning to participate in the county fair as a livestock exhibitor, it's mandatory to complete your YQCA certification. This applies to all market animals that you intend to sell including poultry & rabbits. Additionally, if you're planning to show livestock at the Kansas State Fair and/or Kansas Junior Livestock Show, you must have completed the certification to be eligible to show.

This will take place at the 4-H Building on April 8th, at 7:00PM

To register for the training:

Go to <https://yqcaprogram.org/>

Log in or create an account

Choose instructor-led training certification, if you want to attend an in-person training.

Instructor-led training certification: \$3

Online certification training: \$12

For questions contact Jade Greene at jsgreene@ksu.edu

COUNCIL & LEADERSHIP MEETING

Come and join us on Monday, April 21st for the 4-H Council meeting at 7:00PM with the Jr Leadership Meeting at 7:45pm. This will take place at the Extension Office.

CLOVERBUDS

Cloverbuds is for kids 5-6 years old to learn about 4-H in a fun and non-competitive way!

If you know any children interested in fun, we invite them to join our Cloverbuds program. No fee to join! Enrollment is open.

Cloverbuds meetings will be held at **Stevens County Extension Office on Tuesday, April 8th from 3:00-3:45 pm.**

Contact Nancy Honig if you have any questions nhonig@ksu.edu

SARA LEE AND E. BUDD ANDERSON YOUTH GRANT

The Anderson grant was established for Stevens County Youth to improve their community through leadership projects either done individually, as a small group, or as a club. The grant money, up to \$1,000 is to be used to fulfill a community need. **We are still taking applications.** *Last year the grant was used for painting parking lot lines of many churches in the community.* If you have questions about the grant contact Nancy Honig at (620) 544-4359.

<https://wildwest.k-state.edu/4-h/docs/sara%20and%20budd%20grantapp.pdf>

4-H BUILDING DISPLAY CASE

Decorate however your 4-H Club likes. Feel free to promote 4-H or your club.

March/April - Heartland

May/June - Wranglers

GAS CAPITAL MEETING

Gas Capital Livestock Show Committee Planning Meeting will be held on **Monday, April 21st @ 6:00PM at the Extension Office.** *Enrollment in the livestock project is **not** a requirement.*

Upcoming date: Gas Capital Spring Show will be on May 3rd.

MARKET ANIMAL WEIGH-IN DATES

If you plan to show a market animal it must be tagged at your county weigh-in.

Contact Jade Greene if you have any questions at jsgreene@ksu.edu

Small Animal

Thursday, April 24th from 4:00-6:00 pm

Saturday, April 26th from 9:00 am - 12:00 pm with Arena Set Up to follow.

ATTENTION SWINE PROJECT PARTICIPANTS

New for Fair this year, the cross class will be broken into light and dark crosses. There will be a champion and reserve champion for both light cross and dark cross in the Grand Drive. You will also be able to bring four pigs to the County Fair. Happy Shopping!!



WILD WEST DISTRICT #18

LEARN MORE WITH K-STATE RESEARCH AND EXTENSION

ADHD Parent Support Group

Every 3rd Wednesday of the month.
A private and supportive group for caregivers
and loved ones of those affected by ADHD

6:30PM @ Starbucks Liberal Location



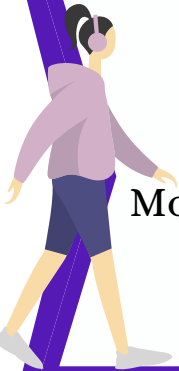
Wild West Walking Tour

Join Walk Kansas as a team or individual!
Grab a copy of our location's and cross off at least
5 for a chance to **win prizes!**

Move more, check out new places, and improve your overall wellness and mood!

Walk Kansas Dates: March 30- May 24

For more info call: (620) 624 -5604

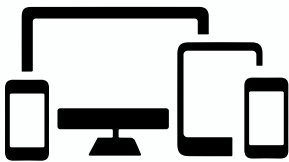


Digital Parenting Class

Join us as we dive deeper into the ins and outs of “digital parenting.”
We will also touch on Parental Control Solutions, and current apps
and their uses. Increase your confidence in you and your child's digital
lives!

Register here!

April 17th @ 6PM
Stevens County Library



Kansas State University Agricultural Experiment Station and Cooperative Extension Service K-State Research and Extension is an equal opportunity provider and employer. K-State Research and Extension is committed to providing equal opportunity for participation in all programs, services, and activities. Program information may be available in languages other than English. Reasonable accommodations for persons with disabilities, including alternative means for communication (e.g., Braille, large print, audiotape, and American Sign Language) may be requested by contacting the event contact Kristin Penner at 620-675-2261 pennerkr@ksu.edu. Requests received after this date will be honored when it is feasible to do so. Language access services, such as interpretation or translation of vital information will be provided free of charge to limited English proficient individuals upon request.

Wild West Walking Locations *Checklist*

Hugoton

- Concanon Park Path
- Frisbee Park Path
- HS Track

Satanta

- Apache Park
- Swim/Grade School Path
- HS Track

Kismet

- Walking Path
- Arkalon Trail

Liberal

- 15th St. Path
- Western Ave. Path
- Light Park Path
- Blue Bonnet Path
- Pine St. Path
- Nat'l Beef Field Path
- Country Club Park Path
- Mahuron Path
- McCray Path
- All Tracks

Sublette

- Walking Path
- Rec. Walking Track
- HS Track

Moscow

- Recreation Drive Parameter
- HS Track

Participants must be registered for Walk Kansas. Complete a walk at any **5** locations on this list during Walk Kansas and return to your local Extension office to have your name put into our prize raffle!

For More Info Call: (620) 624-5604

SEWING PROJECT MEETINGS



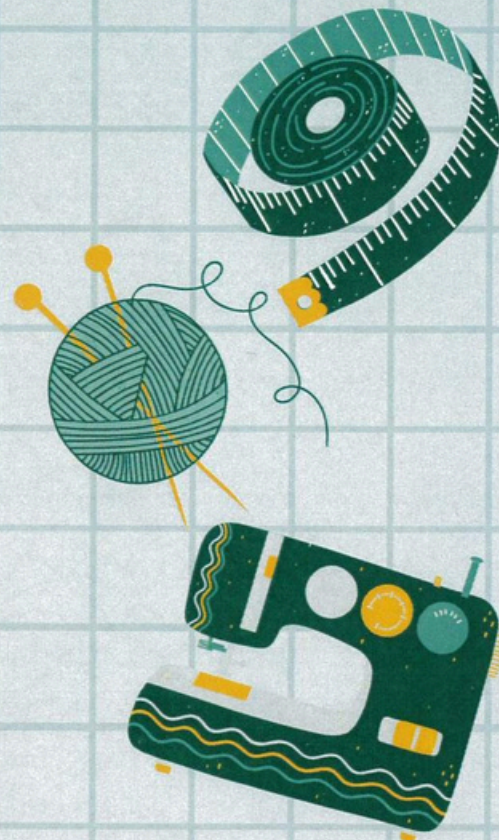
K-STATE
Research and Extension

Wild West District

TAKE ADVANTAGE OF OUR BEGINNER-FRIENDLY
SEWING MEETINGS TO LEARN THE CRAFT AND
PRODUCE LOVELY, HANDMADE PRODUCTS!

UPCOMING DATES:

- MARCH 20
- APRIL 10
- APRIL 24



5:45PM @ 1081 STADIUM ROAD, LIBERAL, KS

WHAT YOU'LL LEARN:

BASIC STITCHES

MACHINE OPERATION

FABRIC SELECTION

PROJECT CREATION

SIGN-UP HERE!



K-State Research and Extension is an equal opportunity provider and employer.

K-State Research and Extension is committed to providing equal opportunity for participation in all programs, services and activities. Program information may be available in languages other than English. Reasonable accommodations for persons with disabilities, including alternative means for communication (e.g., Braille, large print, audio tape, and American Sign Language) may be requested by contacting the event contact Summer Stafford two weeks prior to the start of the event at (620) 624-5604. Requests received after this date will be honored when it is feasible to do so. Language access services, such as interpretation or translation of vital information will be provided free of charge to limited English proficient individuals upon request.

Crochet Amigurumi Basics Training Taught by Hannah & Elizabeth Phan

Thursday, April 3, 2025

4H Building
1081 Stadium Road
Liberal, KS 67901

6-8 p.m.

Yarn & hook provided for lesson. If you want your own hook, please bring a 4mm crochet hook and one skien of yarn so you can continue learning at home! Recommend "I Love This Yarn" or "Red Heart" brands of yarn.

RSVP: <http://bit.ly/3DVyMHU>

Limit 10 kids, ages 9-18