

WILD WEST DISTRICT # 18

NEWSLETTER

*Wild West District # 18 Offices
K-State Extension*

INSIDE THIS MONTH'S ISSUE

4-H Events
Calendar
Upcoming Events

OFFICE HOURS
MONDAY-FRIDAY
9:00 AM- 12:00 PM &
1:00 PM - 5:00 PM

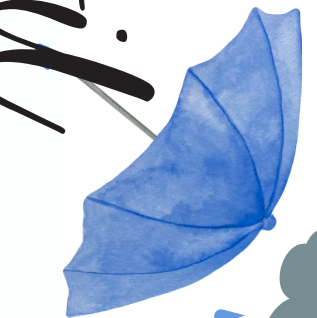


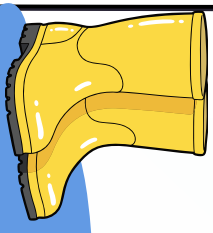
Seward Office
(620) 624-5604
1081 Stadium Rd.
Liberal, KS 67901

Haskell Office
(620) 675-2261
503 S. Fairgrounds Rd.
Sublette, KS 67877

Stevens Office
(620) 544-4359
114 E. 5th St.
Hugoton, KS 67951

April



SUNDAY	MONDAY	TUESDAY	WEDNESDAY	THURSDAY	FRIDAY	SATURDAY
5 HAPPY Easter 	6	7	1 Local 4-H Scholarship Application Deadline	2	3 Office Closed Good Friday	4
12 Haskell Co. Shooting Sports Practice	13 YQCA (Liberal)	14 YQCA (Hugoton)	8	9	10	11 Fabric Grab & Up-Cycle Clothing Project Junior
19 Beef-Project Meeting (Hugoton)	20 Stevens Co. Small Animal Weigh-In & Council Meeting	21	22	23 YQCA (Satanta)	24	18 Haskell & Stevens Co. Small Animal Weigh-In & Fair Set-up
26 SuperStar Zoom Haskell Co. Shooting Sports Practice	27 Seward Co. Small Animal Weigh-In	28	29	30	25 Market Broiler Contest Judging & Processing Day	


National 4-H Volunteer Week


Kansas State University Agricultural Experiment Station and Cooperative Extension Service K-State Extension is an equal opportunity provider and employer. K-State Extension is committed to providing equal opportunity for participation in all programs, services, and activities. Program information may be available in languages other than English. Reasonable accommodations for persons with disabilities, including alternative means for communication (e.g., Braille, large print, audiotope, and American Sign Language) may be requested by contacting the event contact Kristin Penner at 620-675-2261 pennerkr@ksu.edu. Requests received after this date will be honored when it is feasible to do so. Language access services, such as interpretation or translation of vital information will be provided free of charge to limited English proficient individuals upon request.

SUNDAY		MONDAY		TUESDAY		WEDNESDAY		THURSDAY		FRIDAY		SATURDAY			
<h1>May</h1>												1 Camp Registration Deadline		2 Gas Capital Livestock Show	
3 Haskell Co. Spring Show		4 Volunteer Zoom Meeting		5		6		7		8		9			
10		11		12		13		14		15		16			
17		18		19		20 Haskell Co. Grave Cleaning in Satanta 4-H Council Meeting		21		22		23			
24 SuperStar Zoom		25 Horse Project		26		27 Counselor Training		28		29		30			
31		<p>Please join us in giving a warm welcome back to Jane Eisenhauer!</p>													

Kristin Penner: Director.....

Judy Parsons: 4-H Youth Development.....

Bev Schnellbacher: Haskell County OP.....

Jade Greene: 4-H Youth Development

Pat Burt: Agriculture & Natural Resources.....

Summer Stafford: Family & Community Wellness.....

Kateline Carrasco: Seward County OP.....

Nancy Honig: Aging/Youth Development.....

Abbi Burnett: Stevens County OP.....

Jane Eisenhauer: Nutrition Program Assistant.....

★ pennerkr@ksu.edu

judy78@ksu.edu

bschnel@ksu.edu

jsgreene@ksu.edu

paburt@ksu.edu

summerstafford@ksu.edu

kcarrasco@ksu.edu

nhonig@ksu.edu

aburnett5@ksu.edu

jeisenha@ksu.edu



WILD WEST DISTRICT



NOTICE!! DISTRICT WIDE RULE

To be considered a 4-Her in good standing and be able to sell at your county fair's livestock sale, a 4-Her must attend over half of their club's regular meetings, from October thru July. This includes any and all 4-H clubs in the Wild West Extension District.

Anyone in the District interested in getting Certified as a Shooting Sports Instructor, please contact Judy Parsons at 620-453-0732 as soon as possible for details.

BUILDING BLOCK ENGINEERING

Building Block Engineering is the project you need to be in! Join us for a project meeting to learn more about the project and how to showcase your builds at the County and State Fair. You do not have to currently be enrolled in the project to join the meeting. If you plan to enter Legos at the Fair, you will need to be enrolled in this project by May 1st. **Meeting will be held on Tuesday, March 31st at 6:00 PM, via Zoom.** Click [here](#) for zoom link. Contact Jade with any questions jsgreene@ksu.edu



ATTENTION WILD WEST DISTRICT SENIORS:

There are updated County Scholarship Applications on the Wild West District Website, you can find them by clicking [here](#). **Due to your local Extension Office by April 1st, 2026**

YQCA

If you're planning to participate in the county fair as a livestock exhibitor, it's mandatory to complete your YQCA certification. This applies to all market animals that you intend to sell including poultry & rabbits. Additionally, if you're planning to show livestock at the Kansas State Fair and/or Kansas Junior Livestock Show, you must have completed the certification to be eligible to show. **Training can be completed online or in-person. If you choose to do the online training, please email or drop off your certificate by 5:00 PM on July 1st, 2026. ****7 year old members are required to attend an in-person training.**

- Liberal- Monday, April 13th at 7:00 PM
- Hugoton- Tuesday, April 14th at 7:00 PM
- Satanta- Thursday, April 23rd at 7:00 PM

Register at yqcaprogram.org

Contact Jade at jsgreene@ksu.edu with any questions!



SUPERSTAR ZOOM MEETING

If you are a 4-H member living in Haskell, Seward, or Stevens County, we invite you to participate in a Zoom meeting for planning a Livestock Show for special needs youth. For questions contact Jade Greene at jsgreene@ksu.edu

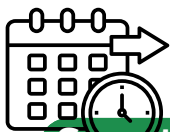
Sunday, April 26th at 7:00 PM

Sunday, May 24th at 7:00 PM

Click [here](#) for zoom link

Monday, June 22nd - Setup for SuperStar

Saturday, June 27th - SuperStar Livestock Show



Save the date:

FABRIC GRAB AND UP-CYCLING CLOTHING PROJECT

We have had a lot of various types of fabric donated recently, and we want to give our 4-H'ers a chance to make use of it! The doors will be open from **10:00 AM – 3:00 PM, on Saturday, April 11th**. Come as you are able and stay as long as you like! We will have some items pre-cut and ready to sew. If you want to bring your own pattern or fabric, feel free! We are happy to help.



BEEF PROJECT MEETING

Scheduled for Sunday, April 19th at 2:00 PM. Located in the Kinser Arena, Steven County Fairgrounds. Bring your calves, or just come watch and learn! OPen to all 4-Hers in the Beef or Bucket Calf project.

SPRING INTO VOLUNTEERING!

Get ready to Spring into Volunteering with the Kansas Association of 4-H Volunteers! Join us for a day of learning, networking, and fun at the Kansas State University Salina Aerospace and Technology Campus.



Date: Saturday, April 25th, 2026

Time: 9:00 AM to 3:00 PM

Location: Kansas State University Salina Aersopace and Technology Campus

Price: \$25

Registration Deadline: Wednesday, April 15th, 2026

To register refer to the flyer on page 9.

LIVESTOCK JUDGING OPPORTUNITY

Saints Showcase Livestock Judging Contest-

Located in Liberal, KS on **Wednesday, April 29th at 8:00 AM**, \$10 per individual
Transportation may be provided if there is enough interest in a contest.
Contact Jade for more information.

UPCOMING DEADLINES

The deadline to add or drop any projects is **Friday, May 1st**. 4-Hers must be enrolled in the specific project to enter the 4-H division for that project at your county fair. Contact your local Extension Office if you have questions about projects or Fair exhibits

Horse and Rabbit ID's are due **Monday, June 1st**

VOLUNTEER TRAINING

All volunteer leaders must attend a one time, in-person training on our Districts policies and procedures. If you have not attended during a 4-H Club meeting or PDC meeting then you must attend one of the following zoom meetings on **Monday, May 4th** or **Tuesday, May 5th at 8:00PM**. Meeting links will be sent out to those that need to attend.

HORSE PROJECT MEETING

Scheduled for Monday, May 25th, we will meet at 10:00 AM at the fairgrounds in Hugoton. Bring your horses and we will practice our riding skills. Horseless youth are encouraged to attend to learn more about horses. Please call before you haul if the weather is nasty

SUMMER CAMPS

Please mark your calendar for our upcoming camps in June!

Camp Lakeside

\$150

June 8th - 9th

Ages: 7-9

Camp Wild Adventures

\$225

June 10th - 12th

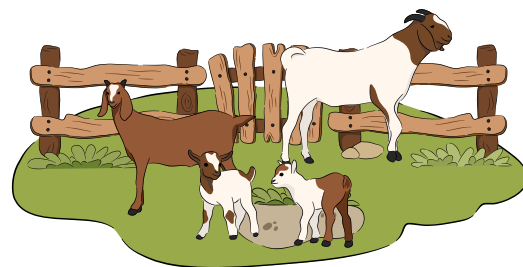
Ages: 10-13

Registration & Payment due by 5:00 PM on Friday, May 1st.

For more information refer to flyer on Page 9

WILD WEST SHOWCASE, LIVESTOCK SHOW

Scheduled for Saturday, June 20th, open to only Wild West District 4-Hers wanting to exhibit their livestock animals. This will be a great opportunity to get your animals out and let them experience a show without having the commotion of a large show. Stay tuned for more details! Contact Jade with any questions jsgreene@ksu.edu



NEW FOR 2026: VOLUNTEER ZOOM SESSIONS

Hello all, can you believe we are already in March? The Kansas Association of 4-H Volunteers is trying something new for this 4-H Year. They will be holding Zoom Connections for Kansas 4-H Volunteers. They are continuing with the theme from the Leadership Forum to nurture more Kansas 4-H Volunteers to be the most successful they can be in their volunteer role!!!

Upcoming Sessions (All 7-8 p.m. via Zoom)

- Sunday, June 28th @ 7 p.m. CT (State Fair, Project Record Books)
 - Sunday, August 30th @ 7 p.m. CT (Club Structure, Club Activities, Volunteer Forum)
- All Volunteer Leaders enrolled in 4-H Online should be receiving emails with zoom links. Contact Judy if you need more information.

DISCOVERY DAYS

Kansas 4-H Discovery Days is planning to be in-person on KSU campus June 3rd - 5th, 2026.

Cost: \$235; some sessions may require an additional fee

Discovery Days is a mini college experience designed for youth who are 13-18 years as of January 1. Youth will have the opportunity to select classes and attend social functions. The primary purpose of 4-H Discovery Days is to gain new ideas and expand your 4-H experience. You experience this through action-oriented learning activities, fun tours, and great evening social events. You will meet new people, build leadership skills, and grow as a person!



COUNTY WIDE RULE

All foods members must have attended 6 regular club meetings from October-July in order to receive Food Auction Premiums and add on's .

GOAT PROJECT MEETING

Scheduled for **Sunday, March 29th at 4:00 PM**, located at the Haskell Commercial Building.

OTHER CLUB MEETINGS

Cloverleaf- **Monday, April 6th @ 7:00 PM**
Victory- **Sunday, April 12th @ 6:00 PM**

CLOVERBUDS

Scheduled for **Wednesday, April 8th at 4-4:45 PM** at the Extension Office. Cloverbuds are youth ages 5-6 years old, and we will meet the 2nd Wednesday of the month through April 2026. Cloverbuds will need to enroll in 4-H Online after **October 1st**.

SHOOTING SPORTS PRACTICE

DATES: (at 3:00 PM)

Sunday, March 29th

Sunday, April 12th

Sunday, April 26th (followed by a cleanup and pizza party)

Participants will be notified of any changes to the schedule.

4-Hers must have their participation fees paid to shoot. For more information, contact Bethany Wood at (620) 510-2636.



*Makennan Kraemer (BB)
Hannah Wood (BB & Air Rifle)
For qualifying for the State Match!*

SMALL ANIMAL & BUCKET CALF WEIGH-IN

Scheduled for **Saturday, April 18th 9:00 – 12:00 PM**. Fairgrounds cleanup and setup starting at 11:00 AM. If you plan to show a market animal, it must be tagged at your county weigh-in. **State Fair/KJLS tags are \$5 each. Payment is due at the time of tagging.** Contact Jade if you have any questions jsgreene@ksu.edu



SPRING LIVESTOCK SHOW

Join us on **Tuesday, May 3rd** at the Haskell County Fairgrounds in Sublette, Ks.

Scales will open at 6:30 AM. Wild West District 4-Hers qualify for a family price break on show day. \$75 max family (or individual entry) this also includes showmanship fees.



COMMUNITY SERVICE

Join us as we clean graves on **Wednesday, May 20th at 5:30 PM** in Satanta. The 4-H Council meeting will follow as well as a pizza party!



SEWARD COUNTY



NOTICE!! ALL SEWARD COUNTY 4-HERS

To be eligible to receive premium money in the 4-H Division for any project at the Seward County Fair, a 4-Her must attend over half (1 over 1/2) of their club's regular meetings, from October through July.

OTHER 4-H CLUB MEETINGS

Ornery Otters- **Monday, April 13th @ 6:30 PM**
Heritage - **Wednesday, April 15th @ 1:00 PM**

CLOVERBUDS

Scheduled for **Wednesday, April 18th at 4-4:45 pm** at the 4-H Building. We will meet the 3rd Wednesday of the month through April 2026.
Cloverbuds will need to enroll in 4-H Online after **October 1st**.

SMALL ANIMAL WEIGH-IN

Scheduled for **Monday, April 27th State Fair/KJLS tags are \$5 each. Payment is due at the time of tagging. Contact Jade if you have any questions jsgreene@ksu.edu**



STEVENS COUNTY



OTHER 4-H CLUB MEETINGS

Wranglers- **Monday, April 6th @ 7:00 PM**
Heartland- **Tuesday, April 21st @ 7:00PM**
Cloverleaf Cowboys- **Monday, April 27th @ 7:00 PM**

CLOVERBUDS

Scheduled for **Monday, April 6th at 4-4:45 pm** at the Extension Office. We will meet the 1st Monday of the month through April 2026.
Cloverbuds will need to enroll in 4-H Online after **October 1st**.

4-H COUNCIL MEETING

Scheduled for **Monday, April 20th at 7:00 PM, followed by the 4-H Jr. Leaders meeting at 7:45 PM**

GAS CAPITAL LIVESTOCK SHOW

Join us on **Monday, May 2nd, the show will be starting with Swine at 8:30 AM.** For questions contact Jade Greene at jsgreene@ksu.edu

SMALL ANIMAL & BUCKET CALF WEIGH-IN

Scheduled for **Saturday, April 18th from 4:00- 7:00 PM.** Fairgrounds cleanup and setup will start at 6:00 pm. This is for **ALL** 4-Hers that will be showing livestock at the Stevens County Fair. Please make a plan to be there to help setup.

Monday, April 20th from 4:00 – 7:00 PM

If you plan to show a market animal, it must be tagged at your county weigh-in. **State Fair/KJLS tags are \$5 each. Payment is due at the time of tagging.** Contact Jade if you have any questions jsgreene@ksu.edu





SEW-TACULAR WORKSHOP

We have had a lot of various types of fabric donated recently, and we want to give our 4-H'ers a chance to make use of it!



APRIL 11, 2026

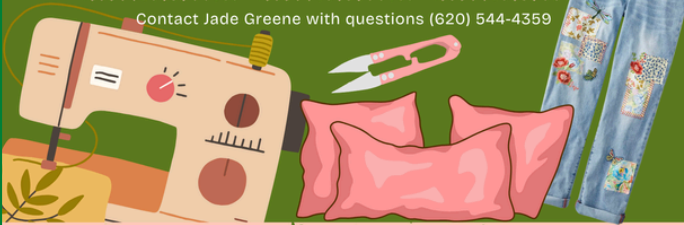
COME AND GO: 10:00 AM - 3:00 PM
Seward County 4-H Building

Fabric Grab
Take what you need to complete a project, or to add to your stash!

OPEN SEW
-Pillow case
-Table Runner
-9-Patch pillow square

Up-Cycle Your Own Denim
using fabric, embroidery, or paint.

Contact Jade Greene with questions (620) 544-4359



This institution is committed to providing equal opportunity for participation in all programs, services, and activities. Program information may be available in languages other than English. Language access requests and reasonable accommodations for persons with disabilities, including alternative means of communication (e.g., Braille, large print, and American Sign Language), may be requested by contacting the event contact Jade Greene four weeks prior to the start of the event at (620)544-4359 or jsgreene@ksu.edu. Requests received after this date will be honored when it is feasible to do so. Language access services, such as interpretation or translation of vital information, will be provided free of charge to limited English proficient individuals upon request.

Spring Into Volunteering!



Welcome, 4-H Volunteers! Get ready to *Spring into Volunteering* with the Kansas Association of 4-H Volunteers! Join us for a day of learning, networking, and fun at the Kansas State University Salina Aerospace and Technology Campus.

Event Details:

- Date: Saturday, April 25, 2026
- Time: 9 a.m. to 3 p.m.
- Location: Kansas State University Salina Aerospace and Technology Campus
- Registration Deadline: April 15, 2026
- Price: \$25

Featured Sessions

- Beyond Ready strategies for today's youth
- Artificial Intelligence tools for 4-H volunteers
- Engaging older youth and young adult volunteers
- Grab-and-go engagement ideas you can use right away

Registration Information



Scan the QR code or visit <https://bit.ly/4sgaGeW>. Register by April 15th to secure your spot!

We are excited to welcome you for a day of collaborative learning, skill enhancement, and fun! See you there!

What To Expect

- Networking Opportunities
- Resource Sharing
- Interactive Workshops
- Lunch Provided Door
- Prizes & Giveaways
- Lots of New Ideas

K-State Extension is an opportunity provider and employer.

BLAST-OFF!

AT 4-H CAMP LAKESIDE

JOIN US IN AN EPIC SUMMER ADVENTURE EXPLORING ALL THAT 4-H CAMP LAKESIDE HAS TO OFFER!

JUNE 8-9 2026

@ CAMP LAKESIDE AT SCOTT LAKE STATE PARK, SCOTT CITY, KS

AGES: 7-9
CAMP FEE: \$150/CAMPER
REGISTRATION DUE: MAY 1ST

Camp fees are due at time of registration. Please visit your local extension office to register!

K-State Research and Extension is an equal opportunity provider and employer. Reasonable accommodations may be requested by contacting the event contact (your local agent or office) two weeks prior to the start of the event.



TAKE FLIGHT!

AT WILD ADVENTURES 4-H CAMP

LET'S SOAR FOR THE SKIES IN AN EXCITING AERONAUTICAL MISSION AT WILD ADVENTURES 4-H CAMP! CAMPER'S WILL EXPLORE THE EXCITING WORLD OF AVIATION THROUGH HANDS ON ACTIVITIES AND CREATIVE CHALLENGES!

JUNE 10-12, 2026

@ CAMP LAKESIDE AT SCOTT LAKE STATE PARK, SCOTT CITY, KS

4-H AGES: 10-13
COUNSELORS AGES: 15-18
CAMP FEE: \$225/CAMPER
REGISTRATION DUE: MAY 1ST

Camp fees are due at time of registration. Please visit your local extension office to register!

K-State Research and Extension is an equal opportunity provider and employer. Reasonable accommodations may be requested by contacting the event contact (your local agent or office) two weeks prior to the start of the event.



WILD WEST DISTRICT #18

LEARN MORE WITH K-STATE EXTENSION

Join us for
CAMPUS COOKING!
Cooking classes curated to work for your busy student life.

Free to all SCCC Students!
Free Kitchen Item for anyone who attends!

HEALTHY, SIMPLE MEALS FOR COLLEGE STUDENTS!

SESSION OPTIONS:

SESSION 1 March 26 th , 2026 5:45 PM - 7:15 PM At Louie's Lounge on SCCC Campus	SESSION 2 March 26 th , 2026 7:30 AM - 9:00 PM At Louie's Lounge on SCCC Campus
--	--

REGISTER BY: MARCH 23RD!



[Online Registration](#)

WHAT TO EXPECT

- ✓ Learn healthy recipes that anyone can follow
- ✓ Learn to utilize the cooking tools you have on-hand
- ✓ Learn how to make your food dollars stretch further

This institution is committed to providing equal opportunity for participation in all programs, services, and activities. Program information may be available in languages other than English. Reasonable accommodations may be requested by contacting Summer Stafford (620) 624-5604, two weeks prior to the start of the event. K-State Research and Extension is an equal opportunity provider and employer.

KANSAS STATE UNIVERSITY
Extension
Wild West District

Grant Writing Workshop

Grants are a vital piece in your community's funding puzzle... and you can do it!

May 19, 2026
9:30 am to 3:30 pm
1081 Stadium Avenue, Liberal, KS
Registration Fee: \$60- Lunch Included

What You Will Learn:

- Sources of data for community needs.
- Where to find grants.
- Elements of a great grant proposal.
- Practicing the grant elements.

Presented by: Nancy Daniels
Community Vitality Specialist
K-State Extension

To register or for more information:
Summer Stafford
summerstaff@ksu.edu
(620) 624-5604
Make checks payable to: Wild West Extension
Registration Deadline: May 14th, 2026

REGISTER HERE



KANSAS STATE UNIVERSITY
Extension
Wild West District

This institution is committed to providing equal opportunity for participation in all programs, services, and activities. Program information may be available in languages other than English. Language access requests and reasonable accommodations for persons with disabilities, including alternative means of communication (e.g., Braille, large print, and American Sign Language), may be requested by contacting the event contact Summer Stafford four weeks prior to the start of the event May 19th, 2026 at (620) 624-5604. Requests received after this date will be honored when it is feasible to do so. Language access services, such as interpretation or translation of vital information, will be provided free of charge to limited English proficient individuals upon request. Kansas State University is an equal opportunity provider and employer.

MARATHON KIDS
JOIN THE WALKING CHALLENGE
WALK KANSAS

WILD WEST WALKERS

MARATHON KIDS CHALLENGE

MARCH 22- MAY 16

Join us for a self-guided Kids Marathon challenge. This event will coincide with Walk Kansas 2026 and allows kids the chance to track activity and increase movement!

WIN PRIZES FOR BIG MILE GOALS!

AGES: 4-12



Scan the QR to join the challenge!

For More Information, Call: (620) 624-5604

K-State Research and Extension is an equal opportunity provider and employer. Reasonable accommodations may be requested by contacting Summer Stafford (620) 624-5604, two weeks prior to the start of the event.

Wild West Walking Checklist

Hugoton	Liberal	Sublette
<input type="checkbox"/> Concanon Park Path	<input type="checkbox"/> 15th St. Path	<input type="checkbox"/> Walking Path
<input type="checkbox"/> Frisbee Park Path	<input type="checkbox"/> Western Ave. Path	<input type="checkbox"/> Rec. Walking Track
<input type="checkbox"/> HS Track	<input type="checkbox"/> Light Park Path	<input type="checkbox"/> HS Track
Satanta	<input type="checkbox"/> Blue Bonnet Path	Moscow
<input type="checkbox"/> Apache Park	<input type="checkbox"/> Pine St. Path	<input type="checkbox"/> Recreation Drive
<input type="checkbox"/> Swim/Grade School Path	<input type="checkbox"/> Nat'l Beef Field Path	<input type="checkbox"/> Parameter
<input type="checkbox"/> HS Track	<input type="checkbox"/> Country Club Park Path	<input type="checkbox"/> HS Track
Kismet	<input type="checkbox"/> Mahuron Path	
<input type="checkbox"/> Walking Path	<input type="checkbox"/> McCray Path	
<input type="checkbox"/> Arkalon Trail	<input type="checkbox"/> All Tracks	

Participants must be registered for Walk Kansas. Complete a walk at any 5 locations on this list during Walk Kansas and return to your local Extension office to have your name put into our **prize raffle!**

K-State Research and Extension is an equal opportunity provider and employer. For More Info Call: (620) 624-5604.

TRACTOR SAFETY

14 and 15 year olds planning to do farm work for someone other than a parent or guardian must take a tractor safety course following the U.S. Department of Labor requirements before being employed for certain hazardous farm tasks. This includes operating a tractor of 20 horsepower or more.

The class is open to teenage youth (ages 14-19)

Pre-Registration required by Noon Wednesday, April 22nd
[Click here to register](#)

DETAILS

- Saturday, April 25th, 2026
- 9:00 AM - 5:30 PM
 - Lunch provided
- Ag Building
 - 1501 W. 8th St. Liberal, KS
- Registration Fee- \$10
- Bring Social Security number

CONTACT US

Please contact the Seward County Extension Office at 620-624-5604 with any questions.

Sponsored by
KANSAS STATE UNIVERSITY
Extension
Seward County
Keating

This institution is committed to providing equal opportunity for participation in all programs, services, and activities. Program information may be available in languages other than English. Language access requests and reasonable accommodations for persons with disabilities, including alternative means of communication (e.g., Braille, large print, and American Sign Language), may be requested by contacting the event contact Pat Burt four weeks prior to the start of the event on April 25th, 2026 at (620) 624-5604 or patburt@ksu.edu access services, such as interpretation or translation of vital information, will be provided free of charge to limited English proficient individuals upon request. Kansas State University is an equal opportunity provider and employer.

Kansas State University Agricultural Experiment Station and Cooperative Extension Service K-State Extension is an equal opportunity provider and employer. K-State Research and Extension is committed to providing equal opportunity for participation in all programs, services, and activities. Program information may be available in languages other than English. Reasonable accommodations for persons with disabilities, including alternative means for communication (e.g., Braille, large print, audiotape, and American Sign Language) may be requested by contacting the event contact Kristin Penner at 620- 675-2261 pennerkr@ksu.edu. Requests received after this date will be honored when it is feasible to do so. Language access services, such as interpretation or translation of vital information will be provided free of charge to limited English proficient individuals upon request.